



Saban
community
clinic

CAMPAIGN FOR THE CRENSHAW HEALTH CENTER

Expanding Health Access in South Los Angeles

A new health center where it's needed most

This fall, Saban Community Clinic will break ground on a new health center in the historic Crenshaw Corridor of South Los Angeles, one of the cities' most underserved neighborhoods. Once completed, this two-story, state-of-the-art facility will provide over 24,000 patient visits each year, becoming a lifeline for families who currently struggle to find consistent access to high-quality care.

With ten medical exam rooms, seven dental operatories, two behavioral health suites, case management services, geriatric specialty care, an on-site pharmacy, and insurance enrollment support, the Crenshaw Health Center will be an anchor of health and stability in a place that has been systematically overlooked for generations.

Your generous support and partnership will allow us to expand our reach and deliver much needed healthcare to this community.



Health equity can't wait

In South Los Angeles, access to healthcare is a daily struggle. Families face higher rates of chronic disease, shorter life expectancies, and fewer resources to prevent illness or manage care. The statistics are stark:



Over 287,000 residents in the Crenshaw Corridor lack access to essential primary care – the highest rate in LA County (*LA County Department of Public Health / HRSA*).



Nearly 1 in 3 adults report delaying or forgoing needed care due to barriers like transportation and limited provider availability (*HRSA, 2022*).



Over 28% of adults in South LA reported fair or poor health, compared to only 8% in West LA, and have dramatically higher diabetes and heart disease rates.



Life expectancy is **13 years lower** in this area than in more affluent areas of LA County (*la.myneighborhooddata.org, 2018*).

Behind the numbers

What families are experiencing

- People skipping checkups
- Children living with untreated conditions
- Families relying on emergency rooms as their only option for preventive services
- Chronic conditions that require regular visits

Every year that passes without dependable and convenient access to high-quality care further deepens these inequities. **That's why we are acting now.**



Whole-person care, close to home

Saban Community Clinic has always stood for a simple truth: healthcare is a human right, not a privilege. The new Crenshaw Health Center will bring that principle to life.

- **One convenient, trusted location** for outstanding medical, dental, behavioral, and specialty care.
- **A culturally sensitive, welcoming environment** where patients feel respected and understood.
- **Care that meets people where they are.** In South Los Angeles, lack of reliable transportation often forces families to delay or skip care altogether. By bringing first-rate services into the community, rather than asking patients to find a ride or take multiple buses, we remove one of the greatest barriers to health.
- **Consistency that drives outcomes**, because when care is close and reliable, people access it; and when people gain access, health outcomes improve.
- **A focus on prevention and long-term wellness—not just treatment.** Empowering patients with the knowledge, tools, and support they need to stay healthy, manage chronic conditions, and build healthier futures for themselves and their families.

The new Crenshaw Health Center represents an opportunity to rewrite the health story of South Los Angeles, ensuring thousands of Angelenos have a place they can count on not once, but for a lifetime.





Building health equity . . . together

Investing in the Crenshaw Health Center is a chance to be a leader in our effort to close one of Los Angeles' most glaring gaps in community health.

Los Angeles is one of the largest and wealthiest cities in the country. Yet, resource disparities remain stark. If you are fortunate enough to have access to excellent healthcare, it's easy to miss how dramatically access changes just a few miles away. The Crenshaw Corridor sits less than 2 miles away from Hancock Park, one of the most affluent neighborhoods in the city; however, residents still struggle to get access to medical, mental health and dental services, or even a local pharmacy.

For families living in these "healthcare deserts," a short distance can feel like a long one for people managing chronic conditions like diabetes and heart disease.

**This is our moment to bridge the distance.
Join us in creating a healthier community for all.**



Miguel's story: breaking free of past trauma

Miguel came to SCC with his mother shortly after they arrived in California. They had heard about the clinic through family and friends and stopped in for a routine checkup and vaccines Miguel needed to enroll in LA County schools. During the visit, his pediatrician noticed Miguel's low mood and screened him for depression.

A few days later, Miguel and his mother returned to begin counseling. He had endured significant trauma, and having behavioral health care in the same place as his medical care made it easier for him and his mother to seek help.

Miguel learned to talk openly about his feelings, accept help from others, and reduce his anxiety. Now, he is a strong, resilient, and resourceful young man who loves going to the beach, drawing landscapes, and making new friends in school.

Miguel's story shows what becomes possible when a child is seen and supported by caring, highly trained providers.

Patient voices



Maya's story: from emergency rooms to consistent care

At age 17, Maya ran away from home and had been living on the streets for over a year. Often times, when she needed clean clothes, a safe place during a rainstorm or help in treating various infections, she would seek care through her local ER. Before she was connected to Saban Community Clinic, she had had more than 30 ER visits in a single year. The constant crisis took a toll on her already compromised health and created a real strain for Maya.

Once she was connected to her primary care provider at SCC, things began to change. Her care team worked hard to build trust with Maya, offering consistent treatment, easy medication refills, specialist care, and even access to hot showers through SCC's free shower program. With ongoing visits and help from our case management team, Maya's ER visits dropped dramatically. Now an adult, she has found stable housing and continues her care through SCC, building the steady foundation she had long been without.

Maya's story shows how dependable, continuous care can replace crisis with stability – and open the door to a healthier future.





The Crenshaw Health Center is an

Opportunity

The Crenshaw Health Center is an opportunity to meet people where they are and bring comprehensive care close to home. Your support will transform bricks and mortar into access and dignity.

- A child with a medical home, no longer relying on the ER as their only option.
- A teen learning to handle their anxiety and improving at school.
- A parent managing chronic conditions with confidence instead of fear.
- A senior receiving dental implants and starting to smile again.
- A family building stability because reliable healthcare makes housing and work possible.
- A community gaining a consistent, permanent resource for high-quality, holistic care.

Frequently asked questions

Why expand?

Health data demonstrates that **the rate of preventable diabetes-related hospitalizations in South LA was 2.5 times higher than in West LA.** Strategic expansion to this location will allow us to reach an area of the city that has been identified as a poverty “hot spot,” where an estimated 287,000 patients each year go without access to care. Placing our health centers where they are needed most is crucial to fulfilling SCC’s mission.

Why Crenshaw?

The Virgil Family Health Center is the closest of SCC’s current sites for Crenshaw residents, but it’s still not “close to home.” **Traveling the 4-mile distance from Crenshaw to Virgil still creates a substantial barrier to obtaining care** -- so preventive visits don’t happen, chronic conditions are left untreated, and patients simply go without. This strategic expansion will allow us to deliver comprehensive care to the community, in the community where they live.

Why now?

Because the need is growing and the safety net is shrinking, we cannot afford to delay. Recent federal funding cuts will leave many people without coverage, while community health resources face underfunding or even closure. That means more families will turn to organizations like SCC for care. **Establishing a permanent, trusted clinic in Crenshaw ensures that when other doors close, this community still has one that is open, providing consistent, compassionate care residents can rely on.**

What will the impact be?

In SCC’s careful analysis of expansion sites before selecting Crenshaw, we discovered **there are thousands of people who currently lack access to care in proximity to the Crenshaw Health Center’s location.** The new center promises to become a permanent, trusted resource in the community for whole-person, quality care. We expect up to 24,000 patient visits in the first year alone!

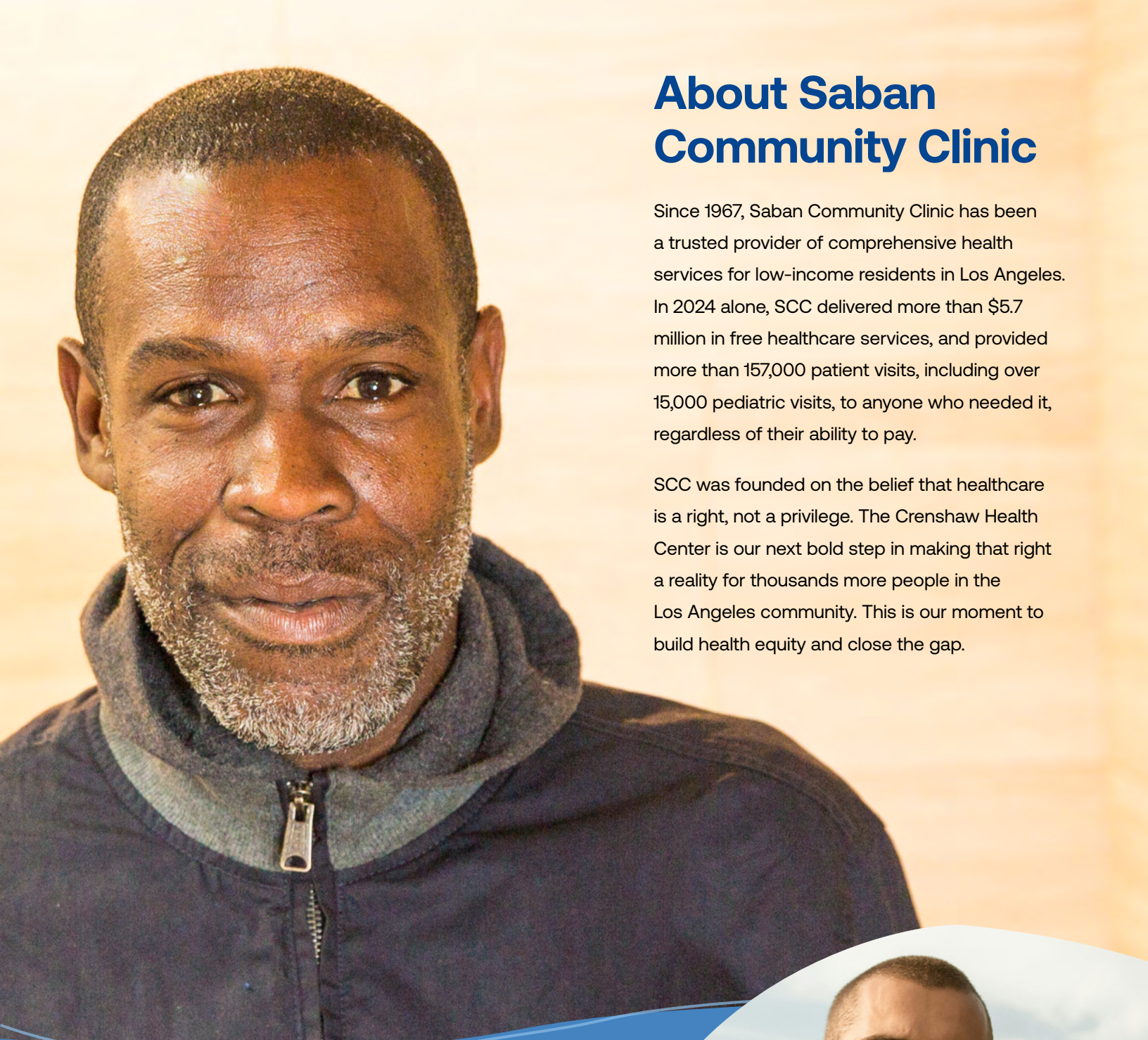
The Crenshaw Health Center will have long term impact that goes beyond just treating the most urgent needs of a sore throat or a nagging toothache. Instead, it’s the chance to provide preventive care, specialty services and outstanding support.

SCC is excited to partner with a community that has long faced systemic barriers in healthcare, economic opportunity, and social support—but it is also a community defined by resilience, resourcefulness, and a deep commitment to wellbeing and progress. **The Crenshaw Health Center represents the chance to dramatically increase our impact in the Los Angeles region,** and be a part of this vibrant community.

When will it open?

Groundbreaking will take place in Winter 2026.
Grand Opening in early 2027!





About Saban Community Clinic

Since 1967, Saban Community Clinic has been a trusted provider of comprehensive health services for low-income residents in Los Angeles. In 2024 alone, SCC delivered more than \$5.7 million in free healthcare services, and provided more than 157,000 patient visits, including over 15,000 pediatric visits, to anyone who needed it, regardless of their ability to pay.

SCC was founded on the belief that healthcare is a right, not a privilege. The Crenshaw Health Center is our next bold step in making that right a reality for thousands more people in the Los Angeles community. This is our moment to build health equity and close the gap.



**Get involved.
Give the gift of health today.**

Donor recognition opportunities are available at every level.

Contact our team today
Contribute@sabancommunityclinic.org

SabanCrenshaw.com/give



Saban
community
clinic

sabancommunityclinic.org